

# B10

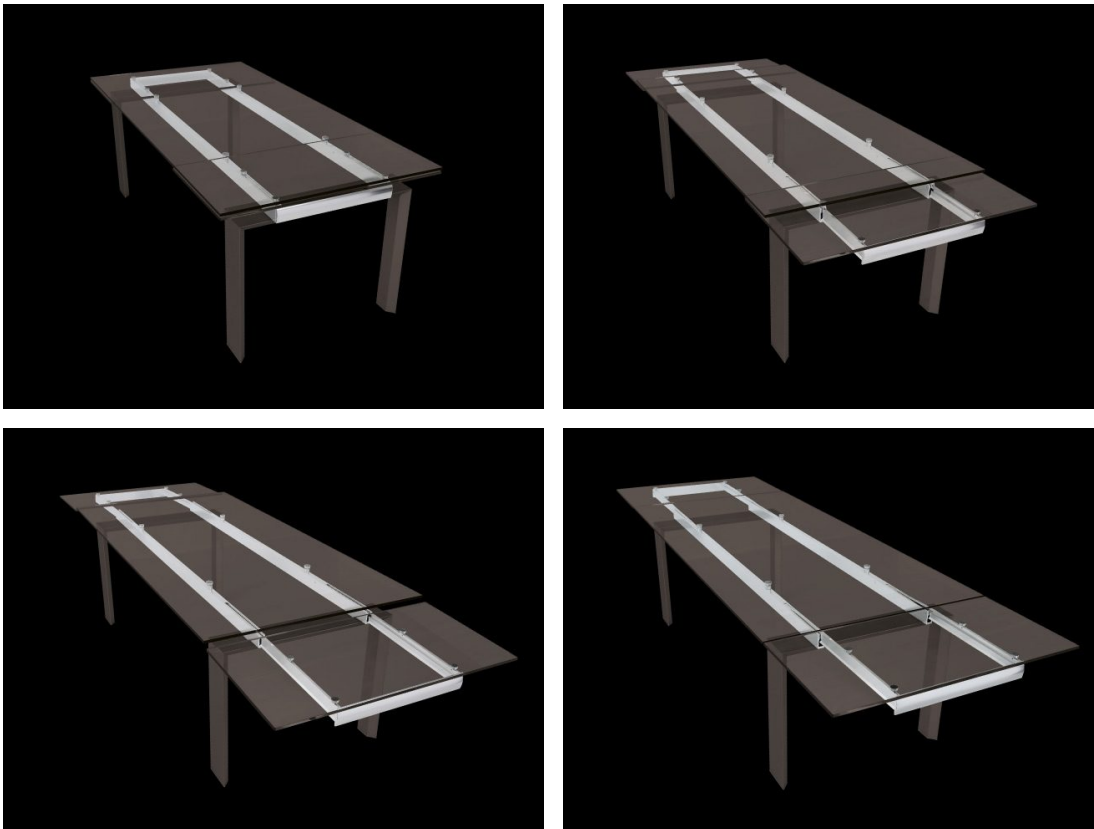
## Telescopic system in aluminium manual head extensions

Telescopic system with sliding mechanism along techno-polymer bearings placed inside the profile. The system works by moving the face at the end of the leaf, it is manually moved upwards bringing the extension to the level of the top and locking there.

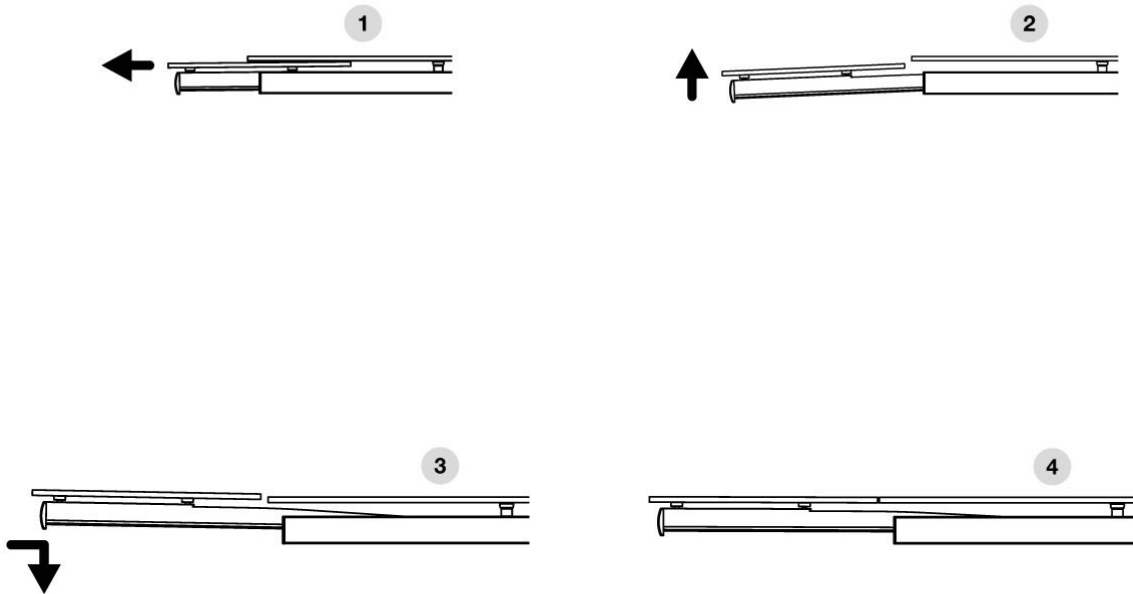
System for fixed legs.

Upon request, legs can be supplied.

Customizations upon request.



## Opening:



---

## Finishings:



---

## Standard Sizes:

Length of table closed / open

1600/2000-2400

1800/2200-2600

2000/2500-3000