

C11G

Parallel system in aluminium manual turn extension

Parallel system with nylon-coated ball bearing sliding mechanism.

The system is extended by moving the leg - upon completing the opening, the leaf is extracted using the rotating mechanism.

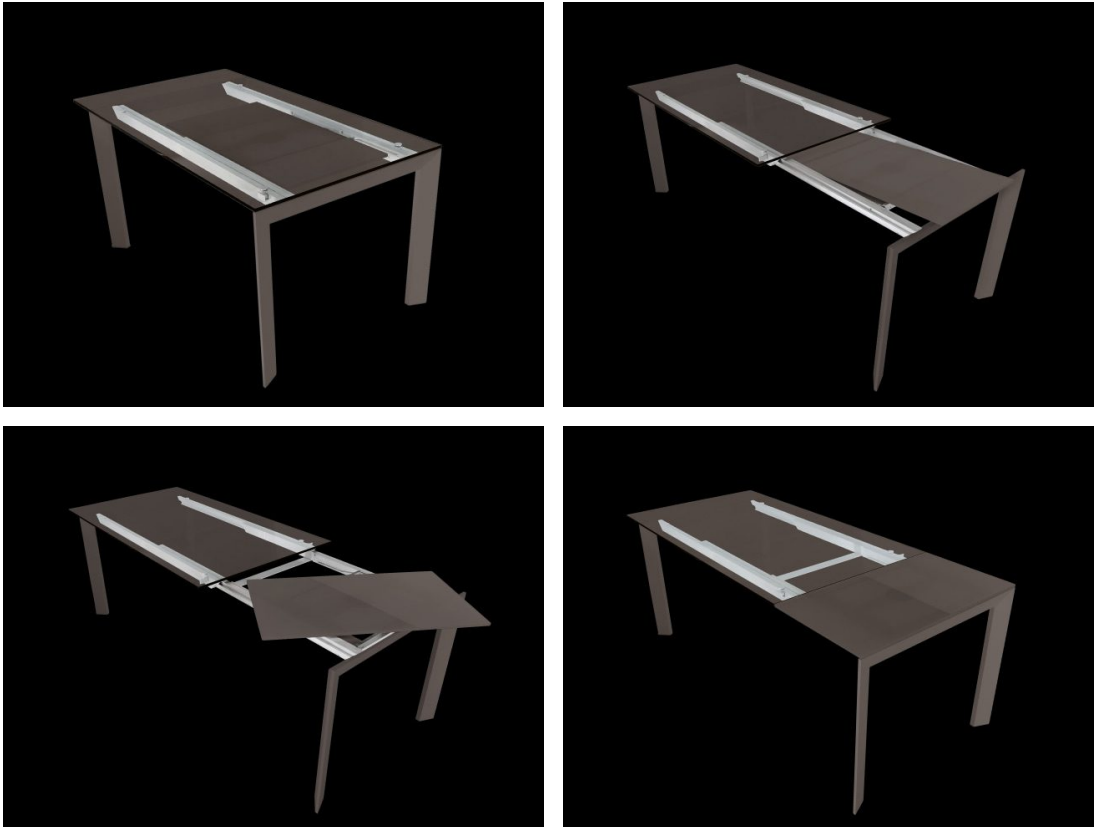
This system is especially suitable for the use of leaves in glass, as for the entire table.

Sliding profile blockage.

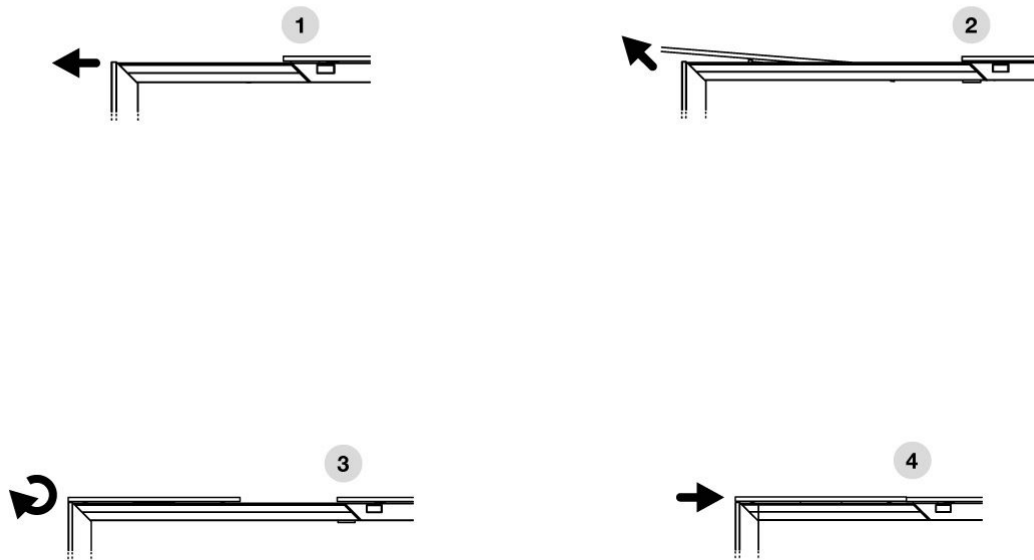
Mechanism for lateral legs.

Upon request, legs can be supplied.

Customizations upon request.



Opening:



Finishings:



Standard Sizes:

Length of table closed / open

900×1400/1900

900×1600/2100

900×1800/2300