

# D12

## Telescopic system in aluminum automatic head extensions

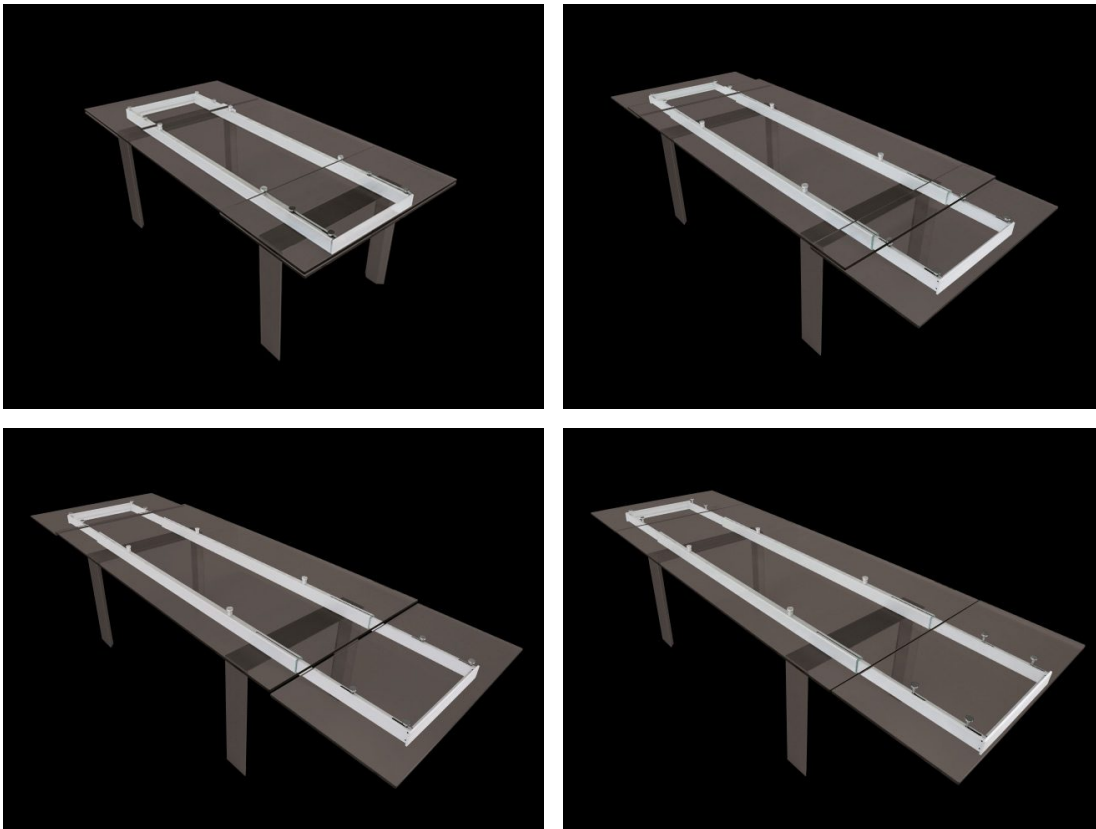
Telescopic system with sliding mechanism along guides placed inside the profile.

The innovation behind this system is found in how easy it is to open each individual extension - by moving the face at the end of the top, with just a light touch it is moved upwards automatically, bringing the extension to the level of the top.

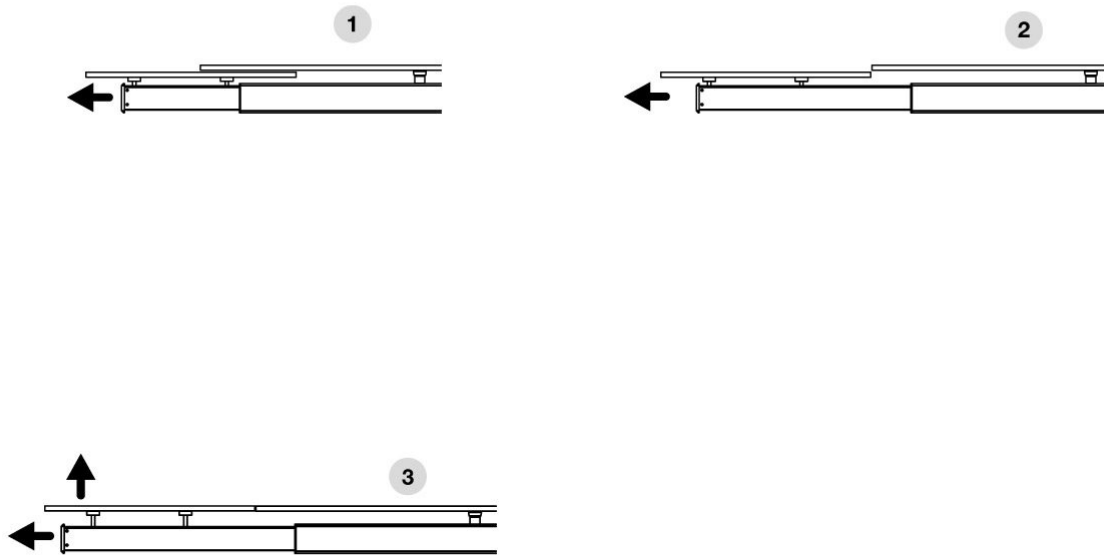
System for fixed legs.

Upon request, legs can be supplied.

Customizations upon request.



## Opening:



---

## Finishings:



---

## Standard Sizes:

Length of table closed / open

1600/2000-2400

1800/2200-2600

2000/2500-3000