

F12L

Parallel mechanism in aluminium for manual extension on one side

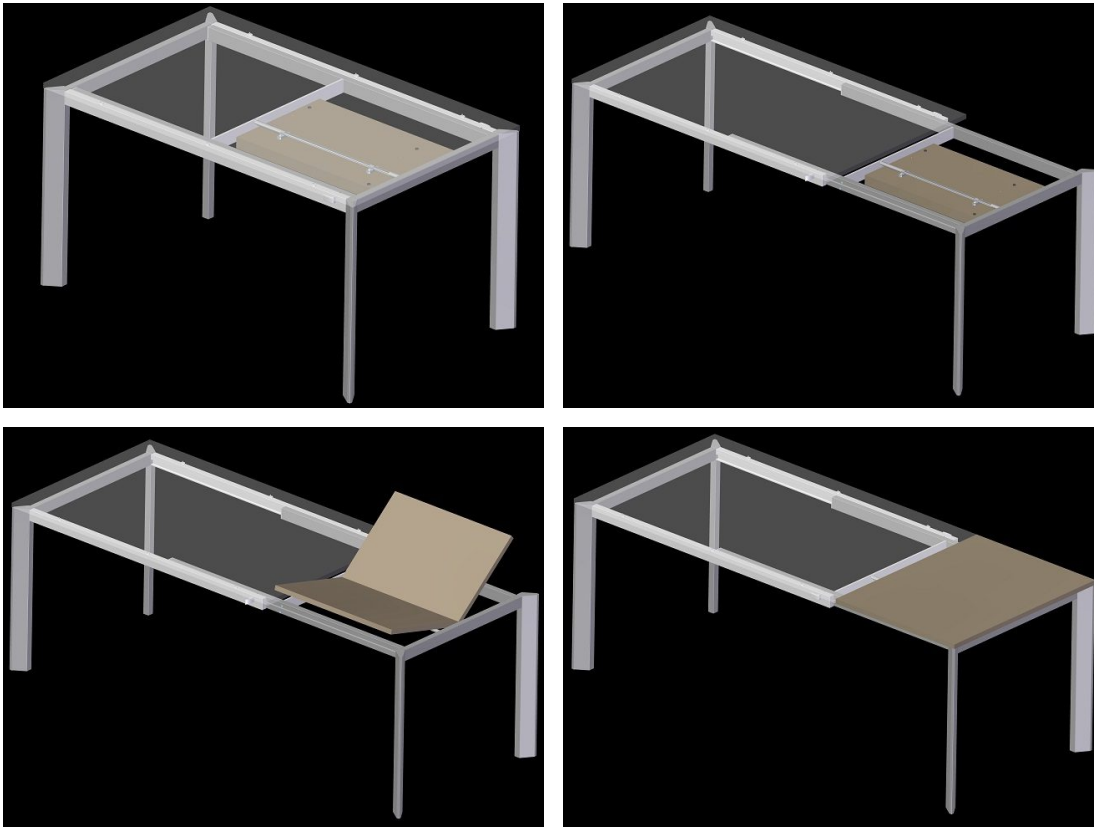
Parallel mechanism that moves on nylon-coated ball bearings.

The system extends by pulling out the movable leg; at its full extent the extension is removed and opened out like a book.

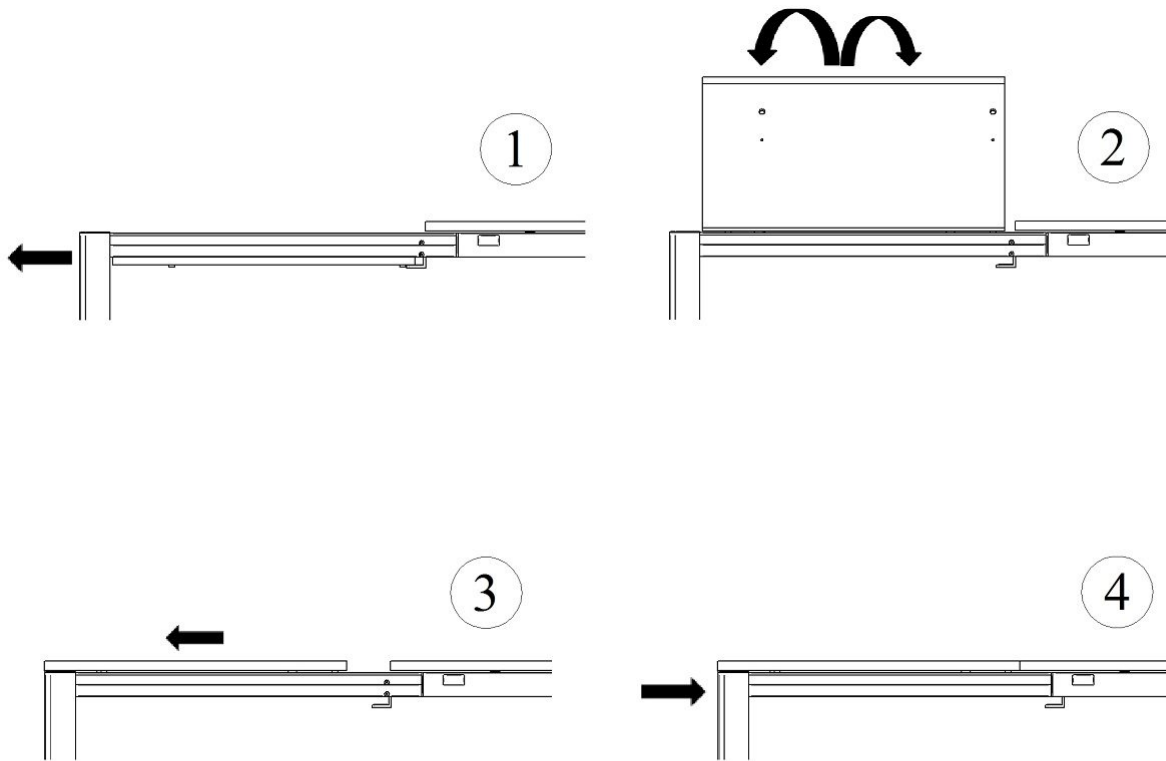
Sliding lock profiles.

Mechanism for movable legs.

A mechanism is available on request complete with legs and customisations.



Opening:



Finishings:



Standard Sizes:

Dimensions (table closed/open)

850×1200/1700

850×1400/1900